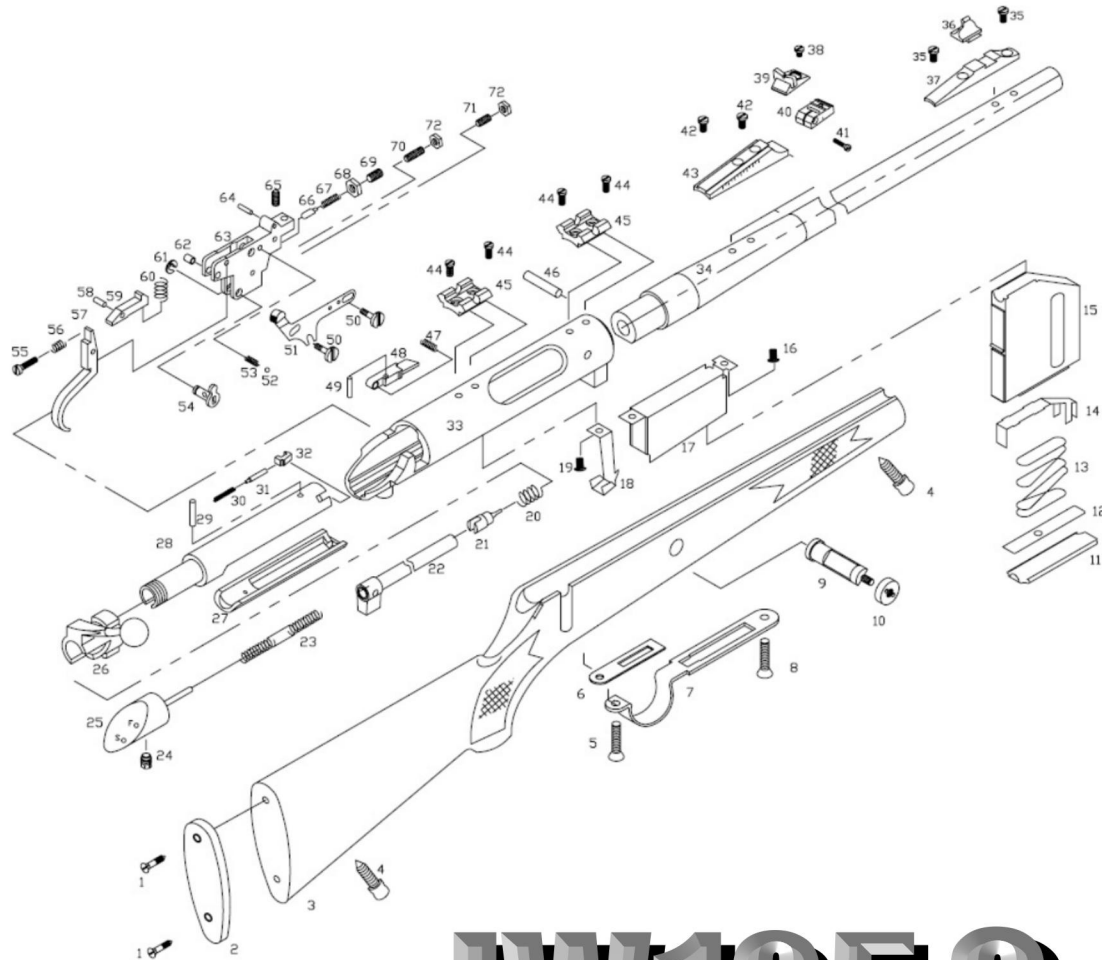


JW-105G



JW105G

NO.	NAMES	NO.	NAMES
1	Buttplate Screw	19	Magazine Catch Screw
2	Buttplate	20	Main Spring
3	Stock	21	Piring Pin
4	SwivelScrew	22	Firing Pin Spring Guide
5	Trigger Guard Screw,Rear	23	Firing Pin Spring
6	Trigger Guard Plate	24	Receiver Extension Screw
7	Trigger Guard	25	Receiver Extension
8	Trigger Guard Screw,Front	26	Breech Bolt Handle
9	Barrel Band Screw	27	Loading Platform
10	Barrel Band Nut	28	Breech Bolt,Front
11	Magazine Buttplate	29	Breech Bolt Retaining Pin
12	Magazine Buttplate Catch	30	Extractor Spring
13	Magazine Spring	31	Extractor Spring Pin
14	Magazine Follower	32	Extractor
15	Magazine,Assy.	33	Receiver
16	Magazine Housing Screw	34	Barrel
17	Magazine Housing	35	Front Sight Base Screw
18	Magazine Catch	36	Front Sight

NO.	NAMES	NO.	NAMES
37	Front Sight Base	55	Safety Screw
38	Rear Sight Screw	56	Safety Screw Spring
39	Rear Sight	57	Trigger
40	Rear Sight Folding Leaf	58	Trigger Pin
41	Rear Sight Folding Leaf Screw	59	Sear
42	Rear Sight Base Screw	60	Sear Spring
43	Rear Sight Base	61	Safety Snap Washer
44	Scope Mount Base Screw	62	Trigger Plate Pin Bushing
45	Scope Mount Base	63	Trigger Housing
46	Barrel Retaining Pin	64	Trigger Housing Pin
47	Safety Stop Bar Spring	65	Trigger Housing Screw
48	Safety Stop Bar	66	Trigger Housing Pin
49	Safety Stop Bar Pin	67	Trigger Spring Nut
50	Safety Retainer Screw	68	Trigger Housing
51	safety	69	Trigger Housing Screw
52	Safety Detent Ball	70	Trigger Housing Screw
53	Safety Screw Spring	71	Trigger Housing Screw
54	Safety Plunger	72	Trigger Housing Nut